

LESSON PLAN

Step 3

JAPANESE SCREENS

Objectives

- Identify the uses of screens.
- Create a miniature folding screen inspired by Japanese examples.

Materials

- Copies of Take-Home Pages 1 and 2.
- Construction paper or plain stock paper.
- Photographs or slides of Japanese screens (*see Resources page for reference books*).
- Pens, pencils, or markers.

Subjects

Art, social studies

Procedure

1. Tell your students that they'll now be studying the unique art form of Japanese screens. Give each student a copy of Take-Home Page 1 and ask them to carefully study the photograph. (*You may also wish to display other screen images from reference books.*) Be sure to stress that the type of screen (*byobu*) reproduced on Take-Home Page 1 comprises a series of six folding, paper

panels framed in wood and measuring about one and one-half meters (about five feet) high and three and one-half meters (about ten and one-half feet) wide. Ask your students to think how such large, lightweight, and highly decorative folding objects might have been used in a traditional Japanese home. Explain that a traditional Japanese home had only one or two stories, no basement, and relatively little floor space. Stress that this limited area often had to serve as a living room, dining room, and bedroom. (*If students need a further hint, ask them to think about how a school gymnasium or auditorium might be temporarily converted for use by a number of different classes.*) Answers may vary, but students will probably conclude that screens served as partitions between functional areas in a traditional Japanese home and could be moved easily to divide existing space in a variety of ways according to different circumstances.

2. Using the photograph on Take-Home Page 1 and additional images from reference books, direct your students to look carefully at the themes depicted in screen artwork. Ask them to

describe generally what they see. Emphasize that screens often show seasonal landscapes and stories from literature, as well as tigers, dragons, deities, and even ghosts.

3. Give each student a copy of Take-Home Page 2. Tell your students that they'll now make their own miniature screen, inspired by the Japanese art form. Ask them to follow the directions on Take-Home Page 2 to create a miniature four-panel screen. Stress that they can decorate their screens in a number of different ways (e.g., a story could be told across the four panels, each panel could feature a different decorative design, or the panels could depict a composite landscape).

4. After students have completed Take-Home Page 2, ask them to explain their designs to the class. What did they depict in their screens? Where would they place their screen (e.g., in a dining area, living room, or bedroom) if it was as large as a traditional *byobu*?

TEACHER'S NOTES

Cherry Blossoms at Ueno Park

Six-fold screen

By Hishikawa Moronobu (1618–94)

Ukiyo-e school, Edo period, seventeenth century
Color and gold powder on paper
Freer Gallery of Art accession number F06.267

180 x 382.2 cm (70 7/8 x 150 1/2")

This scene occurs in Edo, the site of modern Tokyo. The subject of the left screen is cherry blossom viewing and picnicking near the Kan'eiji Temple at Ueno. At the far right is the Kuro-mon, the black gate that until modern times stood in front of the site of the present-day Tokyo National Museum. The Shinobazu pond appears in the foreground, and an array of pilgrims, picnickers, and revelers—the townspeople of Edo—occupies the landscape. On the pair of screens the artist has painted some 394 residents of Edo, with almost no repeating of clothing patterns.

TAKE-HOME PAGE 1

What Is a Japanese Screen?

To the teacher

- Duplicate this page for students.
- Use with Lesson Plan Step 3.

Publication of *Art to Zoo* is made possible through the generous support of the Brother International Corporation.

brother.

TRABAJO PARA HACER EN LA CASA 1

¿Qué es un biombo japonés?

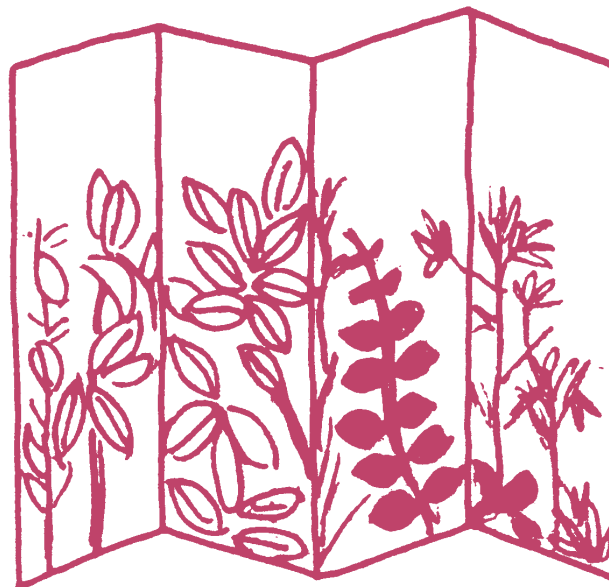
Al maestro (a)

- Copie esta página para los alumnos.
- Usela con el tercer paso del plan de la lección.

Esta publicación ha sido posible gracias al generoso aporte de la Brother International Corporation.



Japanese screens are sturdy, lightweight wood panels that are covered with paper and connected by nearly invisible hinges. There are single-panel screens, but usually you will find panels in pairs. You can find two or four panels together (but not three or five).



Biombos japoneses son paneles de madera, firmes pero livianos, cubiertos de papel y unidos con bisagras casi invisibles.

Hay biombos de un sólo panel, pero usualmente, los biombos estan hechos de pares de paneles. Hay biombos de dos o cuatro paneles, pero nunca de tres o cinco paneles.

TAKE-HOME PAGE 2

How Is a Screen Decorated?

To the teacher

- Duplicate this page for students.
- Use with Lesson Plan Step 3.

Publication of *Art to Zoo* is made possible through the generous support of the Brother International Corporation.

brother.

Pictures or words on a screen often have special meaning. For example, Pine trees = Dignity
Bamboo = Purity
Lions = Power



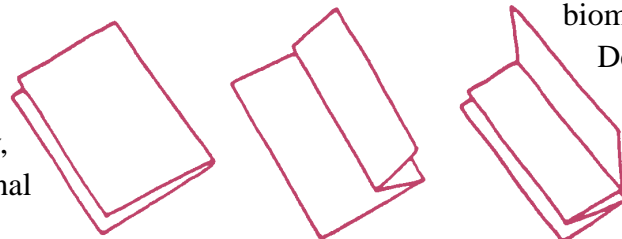
Ilustraciones y palabras en un biombo frecuentemente tienen un significado especial. Por ejemplo, árboles de pino significan dignidad; bambú significa pureza; y leones significan fuerza o poder.

You might also see some calligraphy. This beautiful writing may be the artist's name or a poem.



Make your own screen

Take a sheet of construction paper (or plain paper) and fold it in half once, then twice more. This process will give you an even number of screen panels. Decorate your screen with scenes from your favorite story, a decorative design, or a seasonal landscape.



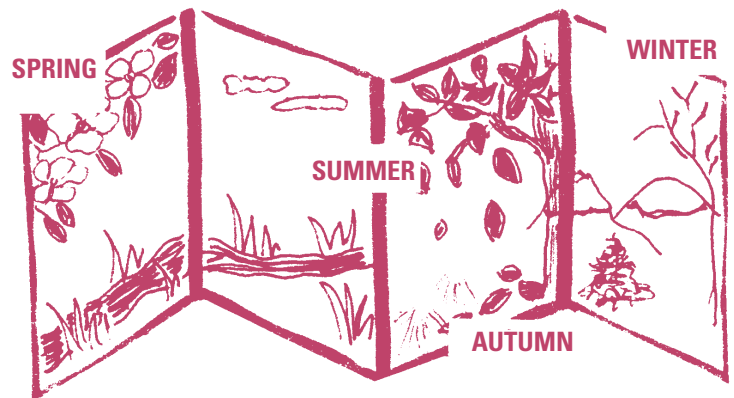
TRABAJO PARA HACER EN LA CASA 2

¿Cómo se decora un biombo?

Al maestro (a)

- Copie esta página para los alumnos.
- Usela con el tercer paso del plan de la lección.

Esta publicación ha sido posible gracias al generoso aporte de la Brother International Corporation.



The changing seasons are often depicted on screens. Look for images of spring, summer, autumn, and winter. Silver and gold on a screen shimmer and reflect light in a dim room.

En algunos biombos se puede ver caligrafía. Esta bella escritura puede ser un poema o el nombre del artista. Frecuentemente se ve ilustrado el cambio de las estaciones. Busca imágenes de primavera, verano, otoño e invierno. Pinturas doradas y plateadas en un biombo brillan tenuemente y reflejan luz.

Haz Tu Propio Biombo

Toma una hoja de papel, dóblala por la mitad y vuelve a doblarla dos veces más. Esto te dará un biombo con pares de paneles.

Decora tu biombo con escenas de tu cuento favorito, con diseños decorativos o con un paisaje estacional.