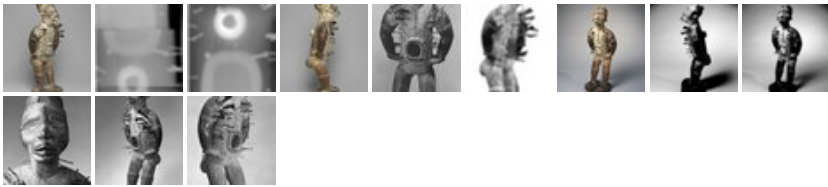


### Collections: Arts of Africa: Power Figure (Nkisi Nkondi)

Collections On View Exhibition Archive Research Resources News Play



Download Favorite Posse icon Send Print



### Power Figure (Nkisi Nkondi)

An *nkisi nkondi* served as a container for potent ingredients used in magic and medicine, in judicial and healing contexts. To make an *nkisi nkondi*, a Kongo carver began by sculpting a male human or animal figure with a cavity in the abdomen; a ritual expert then completed the work by placing ingredients with supernatural powers on the object and in the cavity provided. Nails and blades were driven into the figure, either to affirm an oath or to destroy an evil force.

Culture: [Kongo \(Kakongo subgroup\)](#)  
Medium: Wood, iron, glass mirror, resin, pigment  
Possible Place Made: [Kongo Central Province, Democratic Republic of the Congo](#)  
Dates: 19th century  
Dimensions: 33 7/8 x 13 3/4 x 11 in. (86 x 34.9 x 27.9 cm) [\(show scale\)](#)  
Collections: [Arts of Africa](#)

Search

99,509 records currently online. [advanced](#)

Share Tweet


Tags Talk Related Posse

- Blade [x]
- Healing [x]
- Africa [x]
- Power figure [x]
- Kongo [x]
- nkondi [x]
- nganga [x]
- wooden [x]
- power [x]
- wood [x]
- African sculpture [x]
- Supernatural [x]
- African [x]
- Medicine [x]
- potent [x]
- nkisi [x]
- bilongo [x]
- nkisi nkondi [x]
- figure [x]
- statue [x]
- magic [x]
- nails [x]

enter your own tags

### Tags by Posse members

- [teeds](#) (6)
- [Axelle](#) (1)
- [aguacoco](#) (2)
- [E\\_Fretez](#) (1)
- [Lee\\_Rubinstein](#) (3)
- [tamazovich](#) (2)
- [francesca](#) (4)
- [ninakuriloff](#) (1)

Museum Location:  This item is on view in [South Gallery, 1st Floor](#)

Exhibitions:

[African Innovations \(August 12, 2011 through date unknown\)](#)

Accession Number: 22.1421

Credit Line: Museum Expedition 1922, Robert B. Woodward Memorial Fund

Rights Statement: [Creative Commons-BY](#)

Caption: Kongo (Kakongo subgroup). *Power Figure (Nkisi Nkondi)*, 19th century.

Wood, iron, glass mirror, resin, pigment, 33 7/8 x 13 3/4 x 11 in. (86 x 34.9 x 27.9 cm).

Brooklyn Museum, Museum Expedition 1922, Robert B. Woodward Memorial Fund, 22.1421. [Creative Commons-BY](#)

Image: 3/4, 22.1421\_threequarter\_PS1.jpg. Brooklyn Museum photograph, 2007

Catalogue Description: Image of a man, stuck with nails and kni [read more...](#)

Record Completeness: **Best (91%)** |

## Brooklyn Museum

200 Eastern Parkway

Brooklyn, New York 11238-6052

  Eastern Parkway/Brooklyn Museum

[Get detailed directions](#)

## Hours

Wednesday: 11 a.m.–6 p.m.

Thursday: 11 a.m.–10 p.m.

Friday–Sunday: 11 a.m.–6 p.m.

[Get suggested contribution info](#)

## Contact

Telephone: (718) 638-5000

TTY: (718) 399-8440



[Copyright](#) | [Image Services](#) | [Privacy Policy](#) | [General Disclaimer](#) | [Opt-Out of Personalized Ads](#)

Select Language | ▼