

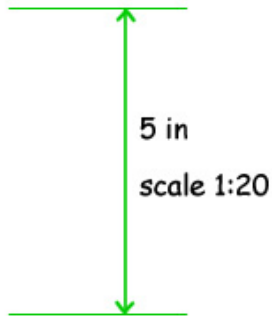


Questions?  
Ask a live tutor now!

Ask Question 

The scale model of a tree is 5 inches high. The scale is 1:20. How tall is the real tree?

Question



Answer

$Y = \text{tree height}$

$$\frac{5}{Y} \times \frac{1}{20}$$

$$1 \times Y = 5 \times 20$$

$$y = \boxed{100 \text{ in}}$$

## 1. Basic Math for Algebra

[Adding real numbers](#)

[Subtracting real numbers](#)

[Multiplying signed numbers a...](#)

[Dividing signed numbers and ...](#)

[Percentages](#)

[Ratios and scale](#)

[Rates and conversion](#)

[Exponents and powers](#)

[Square roots](#)

[Order of operations](#)

[Simplify expressions](#)

[Functions](#)

[Table of Contents](#)

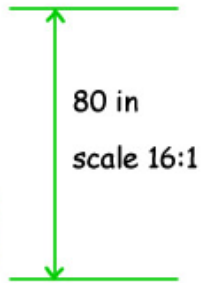


Questions?  
Ask a live tutor now!

Ask Question

An 80 inches drawing of a heart is used by medicine students. If the drawing is at a 16:1 scale, what is the heart's real size?

Question



Answer

$Y =$  Heart length

$$\frac{80}{Y} \times \frac{16}{1}$$

$$\frac{16 \times Y}{16} = \frac{80 \times 1}{16}$$

$$Y = \frac{80}{16} = 5 \text{ in}$$

### 1. Basic Math for Algebra

[Adding real numbers](#)

[Subtracting real numbers](#)

[Multiplying signed numbers a...](#)

[Dividing signed numbers and ...](#)

[Percentages](#)

[Ratios and scale](#)

[Rates and conversion](#)

[Exponents and powers](#)

[Square roots](#)

[Order of operations](#)

[Simplify expressions](#)

[Functions](#)

[Table of Contents](#)

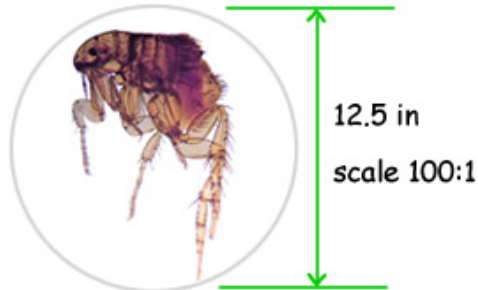


Questions?  
Ask a live tutor now!

Ask Question 

In an image seen under a microscope, a flea is 12.5 inches long. If the real image is 1/100th of the seen image, what is the real size of the flea?

Question



Answer

$Y = \text{Flea length}$

$$\frac{12.5}{Y} \times \frac{100}{1}$$

$$100 Y = 12.5 \times 1$$

$$\frac{100}{100} Y = \frac{12.5}{100} \times 1$$

$$Y = \frac{12.5}{100} = \boxed{0.125 \text{ in}}$$

## 1. Basic Math for Algebra

[Adding real numbers](#)

[Subtracting real numbers](#)

[Multiplying signed numbers a...](#)

[Dividing signed numbers and ...](#)

[Percentages](#)

[Ratios and scale](#)

[Rates and conversion](#)

[Exponents and powers](#)

[Square roots](#)

[Order of operations](#)

[Simplify expressions](#)

[Functions](#)

[Table of Contents](#)



Questions?  
Ask a live tutor now!

Ask Question 

A printer mixes 5 parts of red ink with 2 parts of cyan ink to create a particular shade. John wants to replicate the color to paint a wall, and so he uses 10 quarts of red paint with 4 quarts of cyan paint. Will he obtain the same shade?

Question

Computer Printer  
Ratio Red:Cyan  
5:2

Paint a Wall  
Ratio Red:Cyan  
10:4



$$\frac{10}{4} = \frac{5}{2}$$

Answer

### 1. Basic Math for Algebra

[Adding real numbers](#)

[Subtracting real numbers](#)

[Multiplying signed numbers a...](#)

[Dividing signed numbers and ...](#)

[Percentages](#)

[Ratios and scale](#)

[Rates and conversion](#)

[Exponents and powers](#)

[Square roots](#)

[Order of operations](#)

[Simplify expressions](#)

[Functions](#)

[Table of Contents](#)

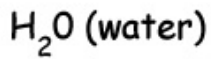


Questions?  
Ask a live tutor now!

Ask Question 

A molecule of water has 2 atoms of hydrogen and 1 atom of oxygen. What is the ratio of the number hydrogen atoms to oxygen in water?

Question



$$\text{H} = 2$$

$$\text{O} = 1$$

Ratio

$$\text{H:O} = 2:1$$

**2:1**

Answer

### 1. Basic Math for Algebra

[Adding real numbers](#)

[Subtracting real numbers](#)

[Multiplying signed numbers a...](#)

[Dividing signed numbers and ...](#)

[Percentages](#)

[Ratios and scale](#)

[Rates and conversion](#)

[Exponents and powers](#)

[Square roots](#)

[Order of operations](#)

[Simplify expressions](#)

[Functions](#)

[Table of Contents](#)

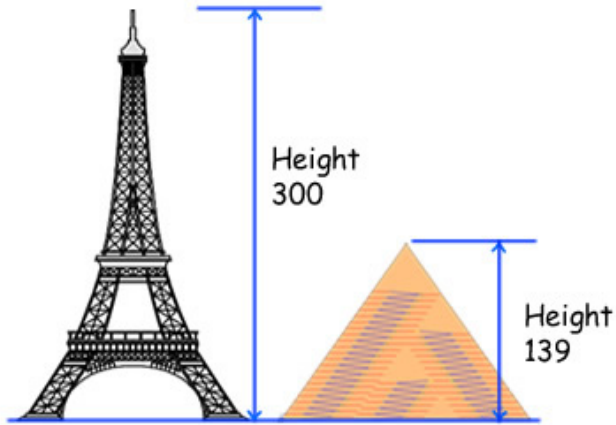


Questions?  
Ask a live tutor now!

Ask Question ▶

The ratio of heights of the Eiffel Tower and the Great Pyramid of Giza is 300:139. Shannon draws the Great Pyramid of Giza with a height of 5 cm, how tall should she draw the Eiffel Tower?

Question



Eiffel Tower      Great Pyramid of Giza

Answer

$$\frac{300}{139} = \frac{y}{5}$$

$$300 \times 5 = 139 \times y$$

$$\frac{300 \times 5}{300} = \frac{139 \times y}{300}$$

$$y = \frac{300 \times 5}{139} = 10.79 \text{ cm}$$

## 1. Basic Math for Algebra

[Adding real numbers](#)

[Subtracting real numbers](#)

[Multiplying signed numbers a...](#)

[Dividing signed numbers and ...](#)

[Percentages](#)

[Ratios and scale](#)

[Rates and conversion](#)

[Exponents and powers](#)

[Square roots](#)

[Order of operations](#)

[Simplify expressions](#)

[Functions](#)

[Table of Contents](#)